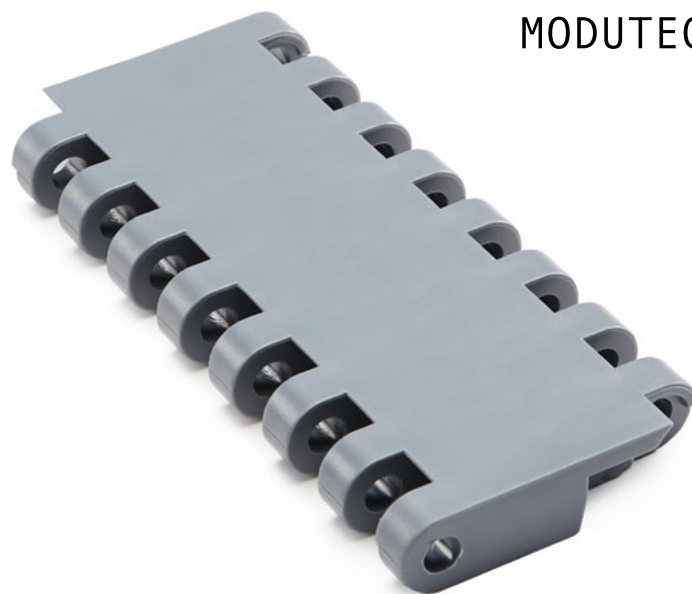




MD508 C (Heavy Duty Food Belts)



Pitch:	50,8 mm / 2 inch
Belt Surface:	Close, Smooth Surface
Minimum Width:	150 mm / 5.90 inch
Open Area (%):	0%
Flight:	Yes (T50, T100, T150)
Sidewall:	No
Rod:	Ø7 mm / 0.275 inch - Self Lock
Approved:	FDA and EU
Curve:	No
Color:	Additional colors available
Cleanability:	Good
Belt Thickness:	16 mm / 0.629 inch

Product Features and Functional Benefits

- Unique sprocket engagement reduces pulsation and increases load capacity.
- High power, bi-directional belt for long conveyors.
- Unique sprocket engagement - higher product load and longer conveyors.
- Strong and thick product supports allow more load without breaking.
- Impact resistance to with stand heavy objects falling into the belt.

Available Moulded Module Sizes

- 150 mm / **5.90 inch** module

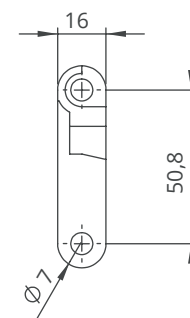
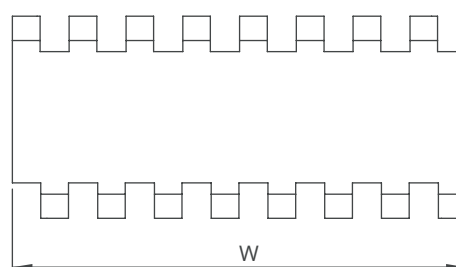
MD508 C / Technical Information

BELT MATERIAL	BELT STRENGTH				TEMPERATURE		BELT WEIGHT
	Straight		Curve		°C / °F (min.)	°C / °F (max.)	Kg/m ² / lb/ft ²
	N/m	lb/ft	N/m	lb/ft			
Polypropylene	37400	2562	-	-	+5 / +41	+90 / +194	8,7 / 1.78
Polyethylene	26400	1808	-	-	-73 / -99.4	+66 / +150.8	9,3 / 1.90
Acetal	66000	4522	-	-	-43 / -45.4	+110 / +230	13,5 / 2.77

- Belt strength and temperature values are maximum on the table.

MD508 C / Standard Belt Widths

BELT SERIES	WIDTH (W)				Belt With Tolerance (max.)
	PP-PE		POM		
	mm	inch	mm	inch	
MD508 C	150,0	5.91	150,0	5.91	± 0,5 mm
MD508 C	225,0	8.86	225,0	8.86	± 2 mm
MD508 C	300,0	11.81	300,0	11.81	± 2 mm
MD508 C	375,0	14.76	375,0	14.76	± 2 mm
MD508 C	450,0	17.72	450,0	17.72	± 3 mm
MD508 C	525,0	20.67	525,0	20.67	± 3 mm
MD508 C	600,0	23.62	600,0	23.62	± 3 mm
MD508 C	675,0	26.57	675,0	26.57	± 3 mm
MD508 C	750,0	29.53	750,0	29.53	± 4 mm
MD508 C	825,0	32.48	825,0	32.48	± 4 mm
MD508 C	900,0	35.43	900,0	35.43	± 4 mm
MD508 C	975,0	38.38	975,0	38.38	± 5 mm
MD508 C	1050,0	41.34	1050,0	41.34	± 5 mm
MD508 C	1125,0	44.29	1125,0	44.29	± 5 mm



- Standard belt increments 75 mm.
- Non-standard belt increments 18,75 mm.
- Please contact with customer service for precise belt measurements.



MD508 FG (Heavy Duty Food Belts)



Pitch:	50,8 mm / 2 inch
Belt Surface:	Open, Smooth Surface
Minimum Width:	150 mm / 5.90 inch
Open Area (%):	34%. (Biggest opening 6 x 19,8 mm)
Flight:	Yes (T50, T100, T150)
Sidewall:	No
Rod:	Ø7 mm / 0.275 inch - Self Lock
Approved:	FDA and EU
Curve:	No
Color:	Additional colors available
Cleanability:	Good
Belt Thickness:	16 mm / 0.629 inch

Product Features and Functional Benefits

- Belt provides optimal open area for drainage and airflow.
- Unique sprocket engagement reduces pulsation and increases load capacity.
- High power, bi-directional belt for long conveyors.
- Unique sprocket engagement - higher product load and longer conveyors.
- Strong and thick product supports allow more load without breaking.
- Impact resistance to with stand heavy objects falling on the belt.

Available Moulded Module Sizes

- 150 mm / **5.90 inch** module

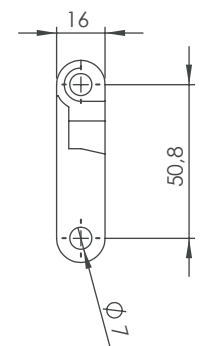
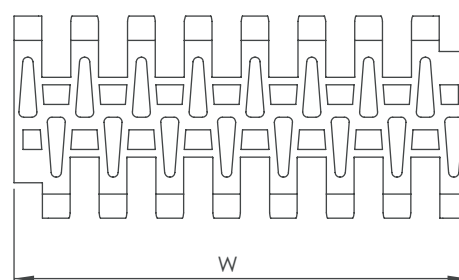
MD508 FG / Technical Information

BELT MATERIAL	BELT STRENGTH				TEMPERATURE		BELT WEIGHT
	Straight		Curve		°C / °F (min.)	°C / °F (max.)	Kg/m ² / lb/ft ²
	N/m	lb/ft	N/m	lb/ft			
Polypropylene	28600	1959	-	-	+5 / +41	+90 / +194	6,8 / 1.39
Polyethylene	19800	1356	-	-	-73 / -99.4	+66 / +150.8	7,2 / 1.48
Acetal	38500	2637	-	-	-43 / -45.4	+110 / +230	10,2 / 2.09

- Belt strength and temperature values are maximum on the table.

MD508 FG / Standard Belt Widths

BELT SERIES	WIDTH (W)				Belt With Tolerance (max.)
	PP-PE		POM		
	mm	inch	mm	inch	
MD508 FG	150,0	5.91	150,0	5.91	± 1 mm
MD508 FG	225,0	8.86	225,0	8.86	± 2 mm
MD508 FG	300,0	11.81	300,0	11.81	± 2 mm
MD508 FG	375,0	14.76	375,0	14.76	± 2 mm
MD508 FG	450,0	17.72	450,0	17.72	± 3 mm
MD508 FG	525,0	20.67	525,0	20.67	± 3 mm
MD508 FG	600,0	23.62	600,0	23.62	± 3 mm
MD508 FG	675,0	26.57	675,0	26.57	± 4 mm
MD508 FG	750,0	29.53	750,0	29.53	± 4 mm
MD508 FG	825,0	32.48	825,0	32.48	± 4 mm
MD508 FG	900,0	35.43	900,0	35.43	± 4 mm
MD508 FG	975,0	38.38	975,0	38.38	± 5 mm
MD508 FG	1050,0	41.34	1050,0	41.34	± 5 mm
MD508 FG	1125,0	44.29	1125,0	44.29	± 5 mm



- Standard belt increments 75 mm.
- Non-standard belt increments 18,75 mm.
- Please contact with customer service for precise belt measurements.



MD508 PR%25 (Heavy Duty Food Belts)

Pitch:	50,8 mm / 2 inch
Belt Surface:	Open, Smooth Surface
Minimum Width:	150 mm / 5.90 inch
Open Area (%):	25%. (Biggest opening 3 x 19,5 mm)
Flight:	Yes (T50, T100, T150)
Sidewall:	No
Rod:	Ø7 mm / 0.275 inch - Self Lock
Approved:	FDA and EU
Curve:	No
Color:	Additional colors available
Cleanability:	Good
Belt Thickness:	16 mm / 0.629 inch



Product Features and Functional Benefits

- Belt provides optimal open area for drainage and airflow.
- Unique sprocket engagement reduces pulsation and increases load capacity.
- High power, bi-directional belt for long conveyors.
- Unique sprocket engagement - higher product load and longer conveyors.
- Strong and thick product supports allow more load without breaking.
- Impact resistance to with stand heavy objects falling on the belt.

Available Moulded Module Sizes

- 150 mm / **5.90 inch** module

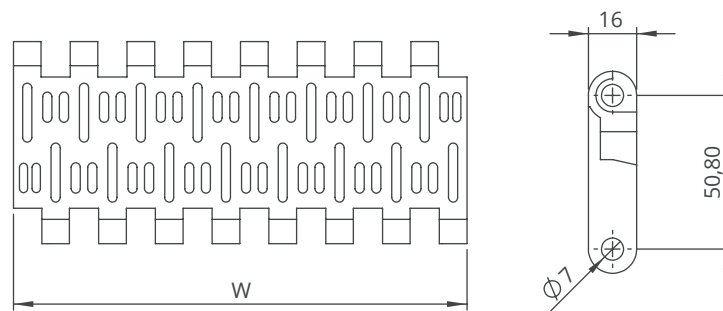
MD508 PR%25 / Technical Information

BELT MATERIAL	BELT STRENGTH				TEMPERATURE		BELT WEIGHT
	Straight		Curve		°C (min.) - °F (min.)	°C (max.) - °F (max.)	Kg/m ² - lb/ft ²
	N/m	lb/ft	N/m	lb/ft			
Polypropylene	41800	2863	-	-	+5 / +42.8	+90 / +194	8,0 - 1.64
Polyethylene	26400	1808	-	-	-73 / -99.4	+66 / +150.8	8,3 - 1.70
Acetal	60500	4145	-	-	-43 / -45.4	+110 / +230	12,0 - 2.46

- Belt strength and temperature values are maximum on the table.

MD508 PR%25 / Standard Belt Widths

BELT SERIES	WIDTH (W)				Belt With Tolerance (max.)
	PP-PE		POM		
	mm	inch	mm	inch	
MD508 PR25	150,0	5.91	150,0	5.91	± 1 mm
MD508 PR25	225,0	8.86	225,0	8.86	± 2 mm
MD508 PR25	300,0	11.81	300,0	11.81	± 2 mm
MD508 PR25	375,0	14.76	375,0	14.76	± 2 mm
MD508 PR25	450,0	17.72	450,0	17.72	± 3 mm
MD508 PR25	525,0	20.67	525,0	20.67	± 3 mm
MD508 PR25	600,0	23.62	600,0	23.62	± 3 mm
MD508 PR25	675,0	26.57	675,0	26.57	± 4 mm
MD508 PR25	750,0	29.53	750,0	29.53	± 4 mm
MD508 PR25	825,0	32.48	825,0	32.48	± 4 mm
MD508 PR25	900,0	35.43	900,0	35.43	± 4 mm
MD508 PR25	975,0	38.38	975,0	38.38	± 5 mm
MD508 PR25	1050,0	41.34	1050,0	41.34	± 5 mm
MD508 PR25	1125,0	44.29	1125,0	44.29	± 5 mm



- Standard belt increments 75 mm.
- Non-standard belt increments 18,75 mm.
- Please contact with customer service for precise belt measurements.

MD508 Series Sprockets and Technical Specifications



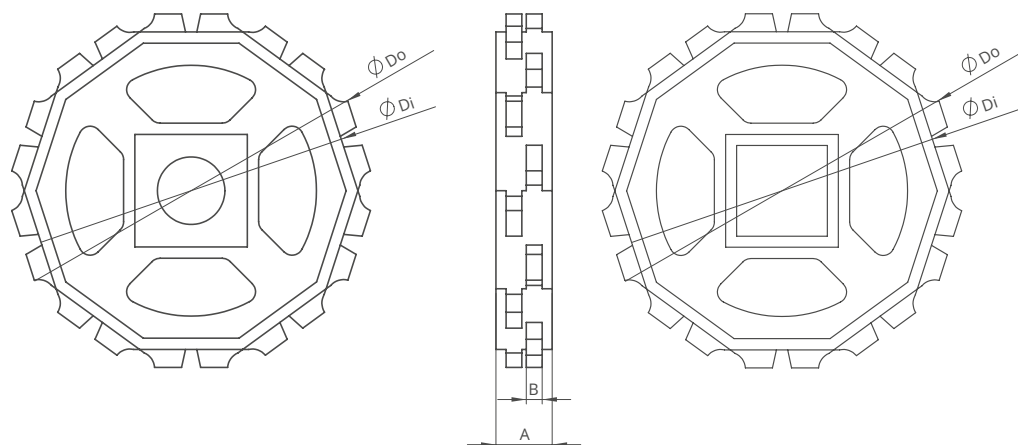
Z8



Z10



Z12



MD508 Series / Standard Sprockets Dimensions

NO. TEETH	Di mm/inch	Do mm/inch	B mm/inch	A mm/inch	Square Bore (Q) mm/inch	Round Bore (R) mm/inch	PRODUCT CODE	
							Square Type (Q)	Round Type (R)
Z8	107,37 / 4.23	127,35 / 5.01	7 / 0.27	40 / 1.57	40 / 1.5	25-30 / 1-1.25	MD508SQZ8*POM	MD508SRZ8*POM
Z10	141,27 / 5.56	160,14 / 6.30	7 / 0.27	40 / 1.57	40-60 / 1.5-2.5	25-30 / 1-1.25	MD508SQZ10*POM	MD508SRZ10*POM
Z12	174,71 / 6.87	193,24 / 7.61	7 / 0.27	40 / 1.57	40-60 / 1.5-2.5	25-30 / 1-1.25	MD508SQZ12*POM	MD508SRZ12*POM

*Other sprockets and hub sizes are manufactured up to request.

*PA (Polyamide) and PP (Polypropylene) sprockets raw material is available on request.

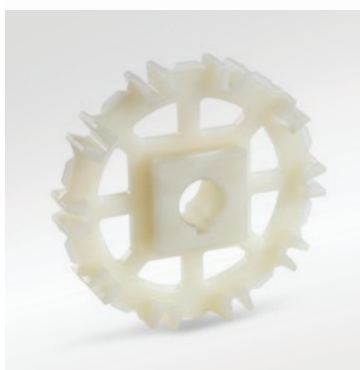
***Machined Split Sprockets are available for each size.**



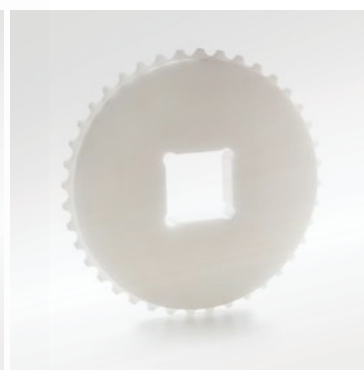
Clamp



Machined Split Sprocket



Moulded Sprocket

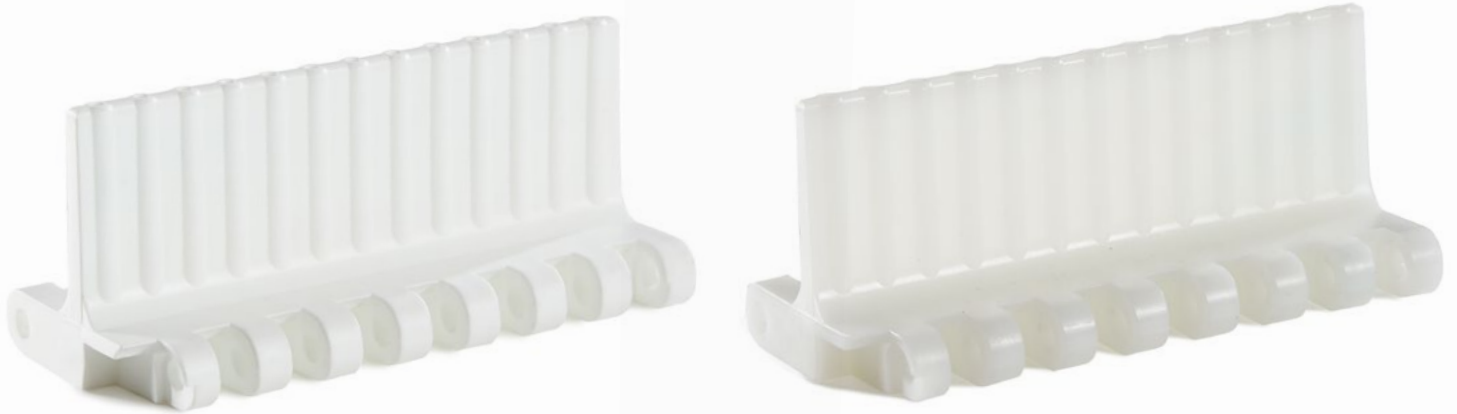


Machined Sprocket

MD508 Series *Accessories and Technical Specifications*



MODUTECH



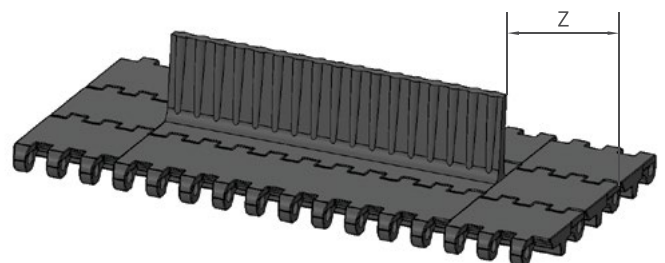
MD508 Series / Flight Dimensions

MD508 Series / Flights				
PRODUCT CODE	Flight Height (mm/ inch)	Flight Width (mm/ inch)	PRODUCT CODE	Sidewall Height (mm/ inch)
MD508T50	50 / 2	150 / 5.90	-	-
MD508T100	100 / 4	150 / 5.90	-	-
MD508T150	150 / 6	150 / 5.90	-	-

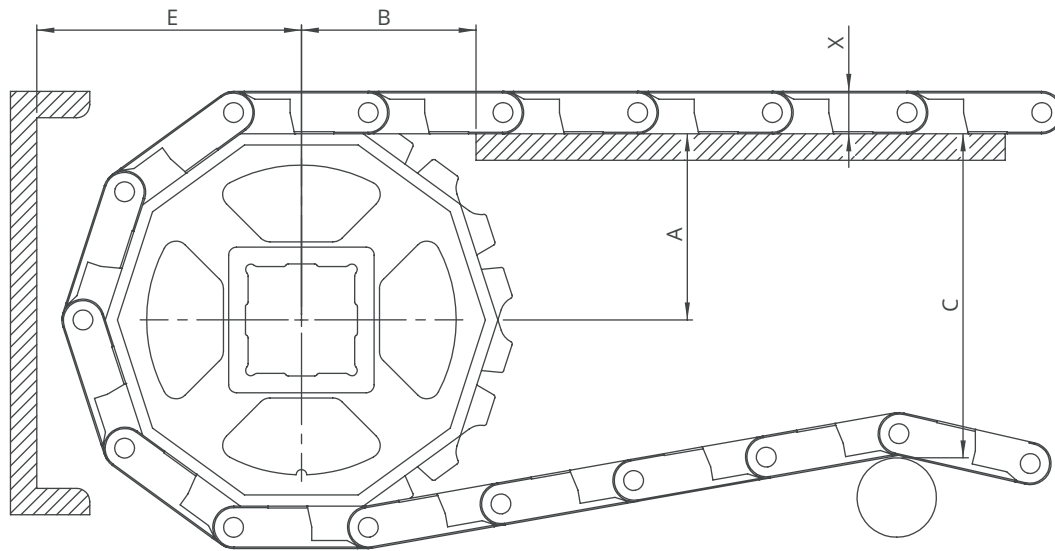
MD508 Series / Flight Technical Specifications

Possible Flight Indents for MD508 Series	Z	
	mm	inch
Standard, module cutting	37,5	1.48
Standard, module cutting	56,0	2.20
Standard, no module cutting	75,0	2.95
Standard, module cutting	112,5	4.43

*Non-standard flight indent is on request.



MD508 Series *Engineering Information*

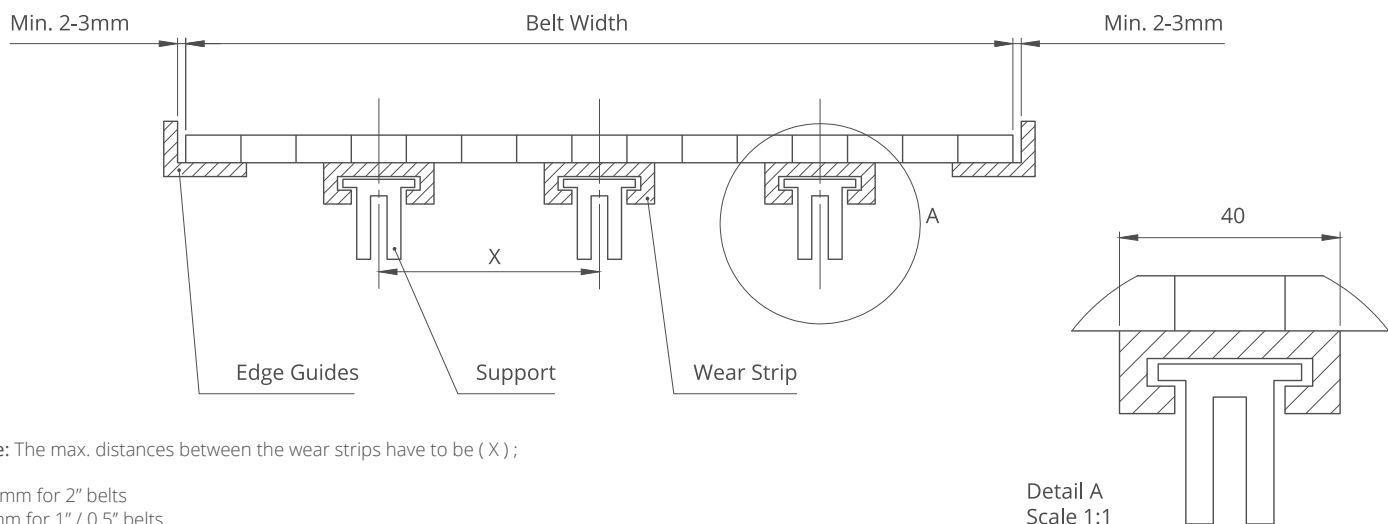


A - ± 0,031" (1mm) C - ± (Max.)
 B - ± 0,125" (3mm) E - ± (Min.)

MD508 Series / Conveyor Frame Dimensions

Sprockets Description		A		B		C		E		X		
Pitch Diameter		Range (Bottom to Top)		inch	mm	inch	mm	inch	mm	inch	mm	
inch	mm	inch	mm									inch
MD508 C, MD508 PR%25, MD508 FG												
4.65	118,0	8	2.29	58,1	2.94	74,8	3.79	96,2	3.11	79,1	0.63	16,0
5.94	151,0	10	2.92	74,3	3.57	90,7	5.06	128,5	3.75	95,3	0.63	16,0
7.32	186,0	12	3.56	90,5	4.20	106,7	6.33	160,9	4.39	111,4	0.63	16,0

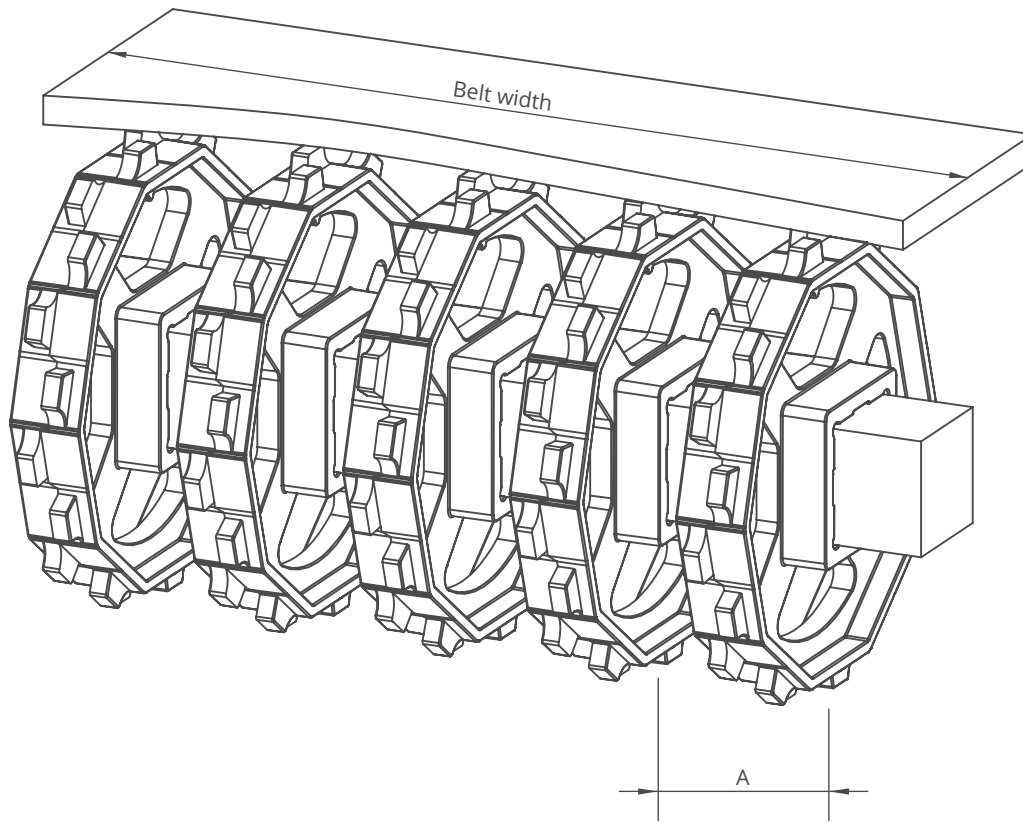
MD508 Series / Slider Support System For Straight Running Belts



Note: The max. distances between the wear strips have to be (X) ;

125 mm for 2" belts
 80 mm for 1" / 0.5" belts

Detail A
 Scale 1:1



MD508 Series / Sprockets Arrangement

Standard Belt Width		Number of sprockets per shaft		A (mm/inch)	
mm	inch	Drive Shaft	Return Shaft	Min.	Max.
150,0	5.90	2	2	60/2.36	150/5.9
225,0	8.86	3	2	60/2.36	150/5.9
300,0	11.81	3	3	60/2.36	150/5.9
375,0	14.76	4	3	60/2.36	150/5.9
450,0	17.72	4	3	60/2.36	150/5.9
525,0	20.67	5	4	60/2.36	150/5.9
600,0	23.62	5	4	60/2.36	150/5.9
675,0	26.57	6	5	60/2.36	150/5.9
750,0	29.53	6	5	60/2.36	150/5.9
825,0	32.48	6	5	60/2.36	150/5.9
900,0	35.43	7	6	60/2.36	150/5.9
975,0	38.39	8	7	60/2.36	150/5.9
1050,0	41.34	9	7	60/2.36	150/5.9
1125,0	44.29	10	8	60/2.36	150/5.9
1200,0	47.24	11	8	60/2.36	150/5.9
1275,0	50.20	12	9	60/2.36	150/5.9
1350,0	53.15	13	10	60/2.36	150/5.9
1425,0	56.10	14	10	60/2.36	150/5.9
1500,0	59.06	15	11	60/2.36	150/5.9
1575,0	62.00	16	12	60/2.36	150/5.9

Note: Number of sprockets depends on the belt load.